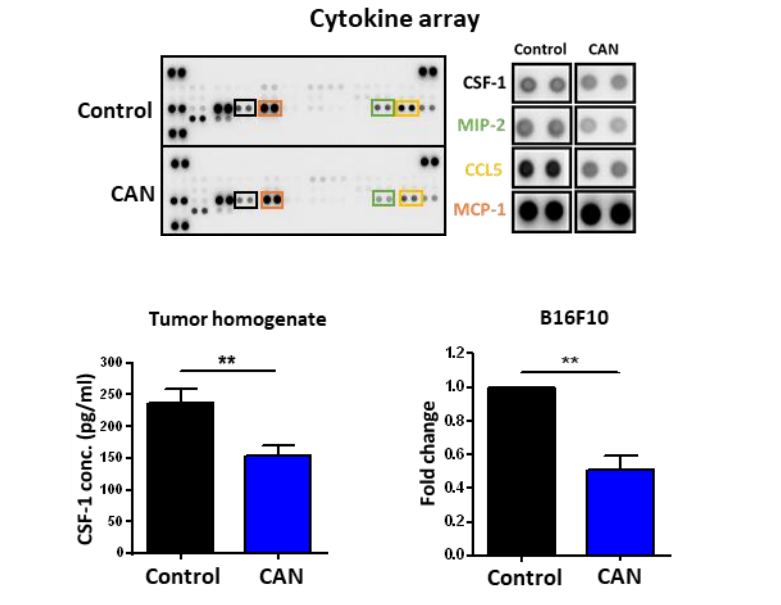


Decreased melanoma CSF-1 secretion by Cannabigerol treatment reprograms regulatory myeloid cells and reduces tumor progression

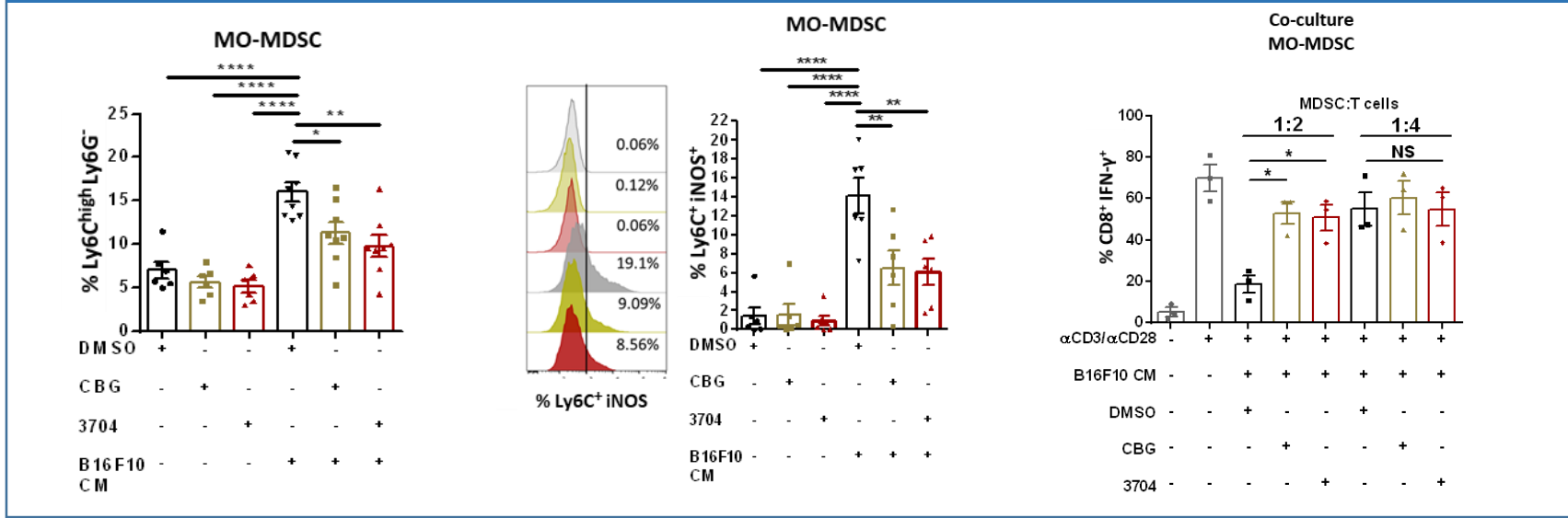


Wyrobnik *et al.* *Oncol Immunology*

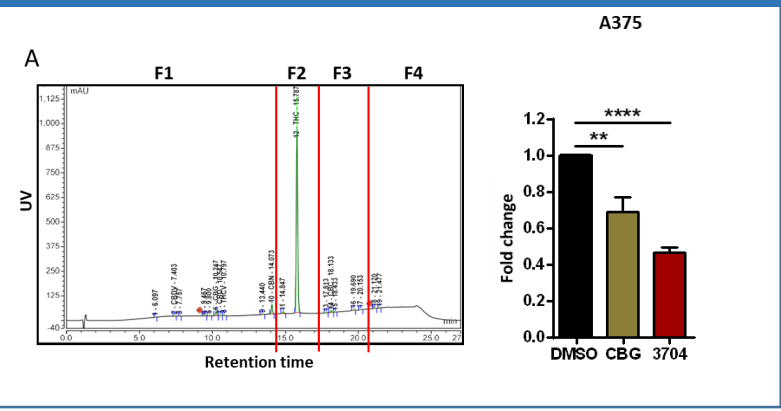
CSF-1 secretion is reduced after treatment with a high-THC Cannabis extract



Conditioned medium of CBG-treated cells reduces MO-MDSC expansion and immunosuppressive activity



CBG reduces CSF-1 secretion by melanoma cells



CBG and αPD-L1 treatment most efficiently reduces tumor progression

